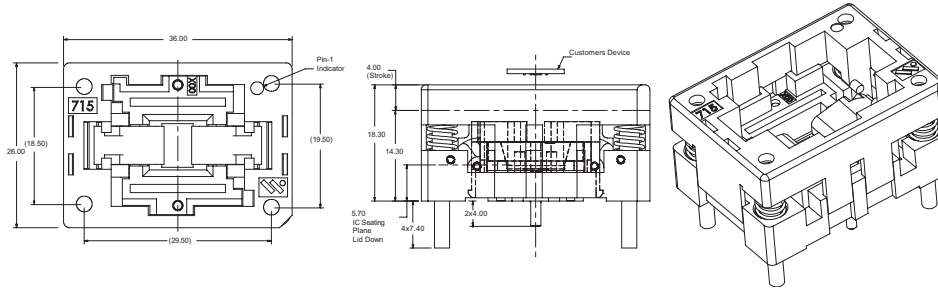
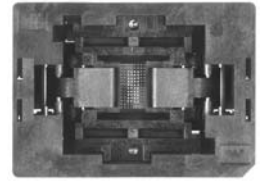


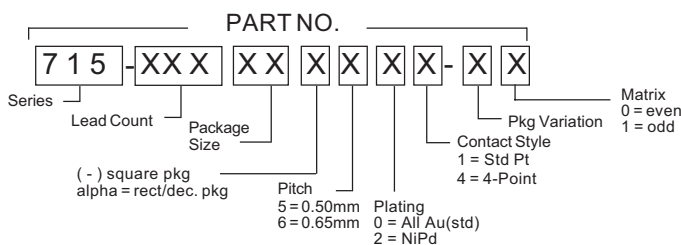
715 Series Open Top CSP Socket for Microarray Packages

- Open Top Chip Scale Package
- Compression surface mount
- Spring and probe contact
- Pointed probe maintains continuous contact to PCB
- Spring loaded floating locator plate



Pitch e (mm)	Lead Count	Package Size (mm)	Matrix	Ball Dia. (mm)	Part Number
0.50	40	8 X 11.5	4 X 10	0.25-0.35	715-04011A50X-XX
	40	9 X 7.7	8 X 14	0.25-0.35	715-04009A50X-XX
	40	9 X 7.7	10 X 4	0.259-0.359	715-04009A504-A2
	40	9.2 X 8.0	12 X 18	0.25-0.35	715-04009B50X-XX
	40	9.95 X 6.95	8 X 14	0.25-0.35	715-04099C50X-XX
	40	11 X 10	10 X 4	0.25-0.35	715-04011B504-A0
	44	9 X 7.7	8 X 14	0.25-0.35	715-04409A50X-XX
	48	10.53 X 6.29	8 X 14	0.25-0.35	715-04810A50X-XX
	52	8 X 6	13 X 4	0.25-0.35	715-05208A504-A1
	54	8.2 X 6.0	9 X 10	0.25-0.35	715-05408A50X-XX
	56	6 X 6	10 X 10	0.27-0.37	715-05606-504-A0
	56	9 X 9	10 X 10	0.25-0.35	715-05609-50X-XX
	64	5 X 5	8 X 8	0.25-0.35	715-06405-504-A0
	64	6 X 6	10 X 10	0.25-0.35	715-06406-50X-XX
	80	5 X 5	10 X 10	0.25-0.35	715-08005-50X-XX
	80	7 X 7	12 X 12	0.25-0.35	715-08007-504-A0
	84	6 X 6	10 X 10	0.25-0.35	715-08406-50X-XX
	84	7 X 7	12 X 12	0.25-0.35	715-08407-50X-XX
	88	6 X 6	11 X 11	0.25-0.35	715-08806-504-A1
	96	6 X 6	11 X 11	0.25-0.35	715-09606-504-A1
	96	8 X 8	14 X 14	0.25-0.35	715-09608-504-A0
	100	6 X 6	10 X 10	0.25-0.35	715-10006-504-A0
	108	7 X 7	12 X 12	0.25-0.35	715-10807-50X-XX
	108	8 X 8	14 X 14	0.25-0.35	715-10808-50X-XX
	112	7 X 7	12 X 12	0.27-0.37	715-11207-504-A0
	132	8 X 8	14 X 14	0.27-0.37	715-13208-504-A0
	137	9 X 9	15 X 15	0.25-0.35	715-13709-504-A1
	144	7.8 X 7.8	13 X 13	0.25-0.35	715-14407-50X-XX
	144	8 X 8	14 X 15	0.25-0.35	715-14408-50X-XX
	148	9 X 9	16 X 16	0.25-0.35	715-14809-504-A0
	160	7.8 X 7.8	14 X 14	0.25-0.35	715-16007-50X-XX
	160	8 X 8	14 X 14	0.25-0.35	715-16008-504-A0
	164	7.75 X 7.85	13 X 13	0.25-0.35	715-16407-504-A0
	169	9 X 9	16 X 16	0.25-0.35	715-16909-504-A0
180	10 X 10	18 X 18	0.29-0.39	715-18010-504-A0	
180	10 X 10	18 X 18	0.25-0.35	715-18010-504-A0	
196	8 X 8	14 X 14	0.25-0.35	715-19610-504-A0	
0.65	71	7 X 7	9 X 9	0.28-0.38	715-07107-604-A1
	96	8 X 8	11 X 11	0.25-0.35	715-09608-604-A1

DESCRIPTION & ORDERING INFORMATION



MATERIALS & SPECIFICATIONS

- Socket Body: PEI, PES, or Equivalent
- Contact: Beryllium Copper Alloy
- Contact Plating: Gold over Nickel
- Contact Normal Force: 12-15 grams typical
- Contact Resistance: 350 mΩ typical
- Temperature Rating: Burn-in @ 125°C
- Durability: 10,000 cycles min.